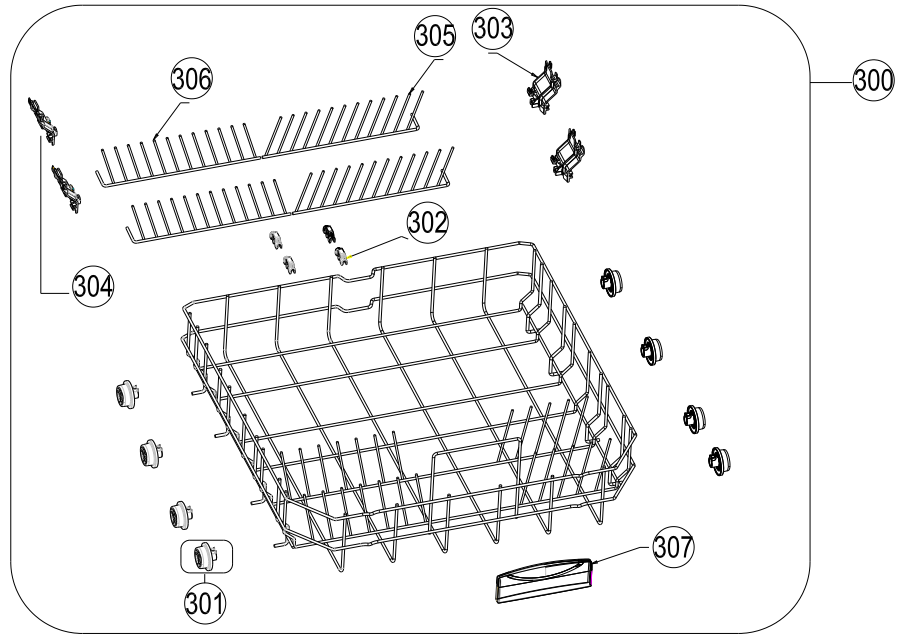
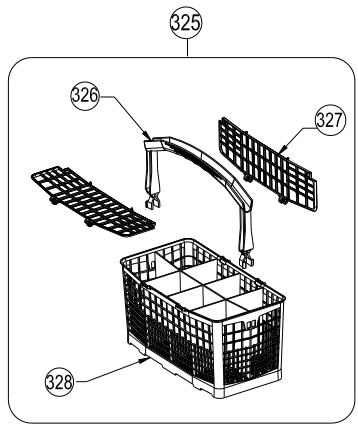




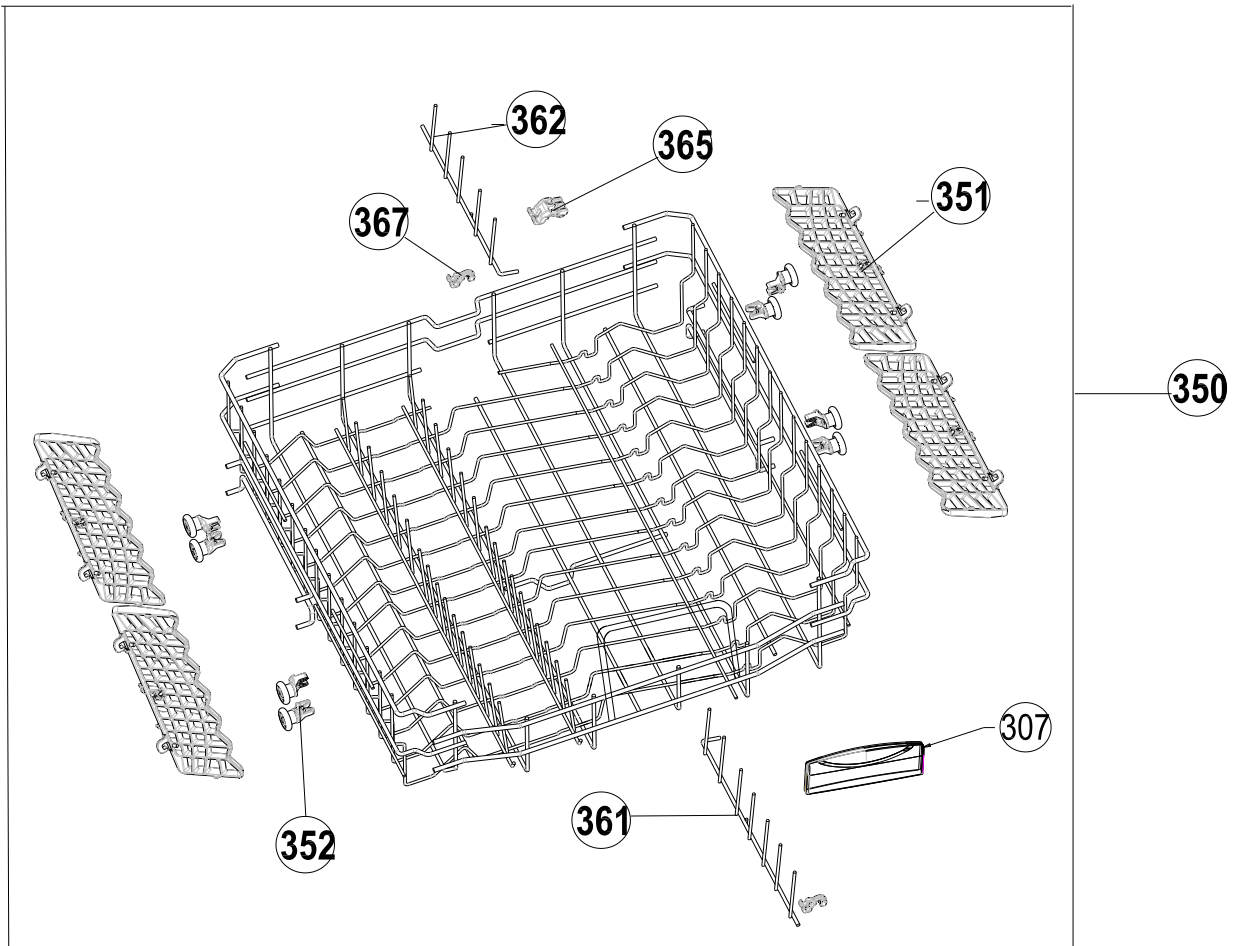
VESTEL DISWASHER MACH .

CONTROL PANEL GROUP

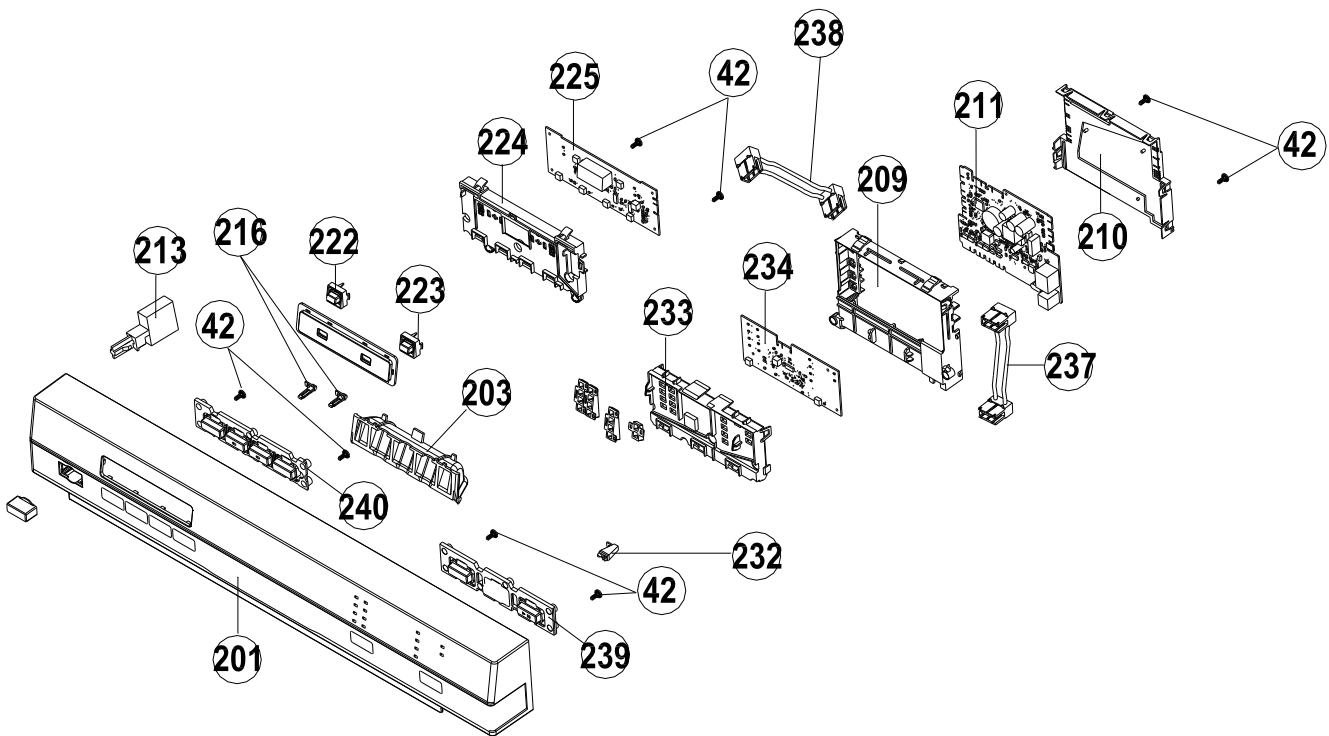
**CUSTOMER
SUPPORT**



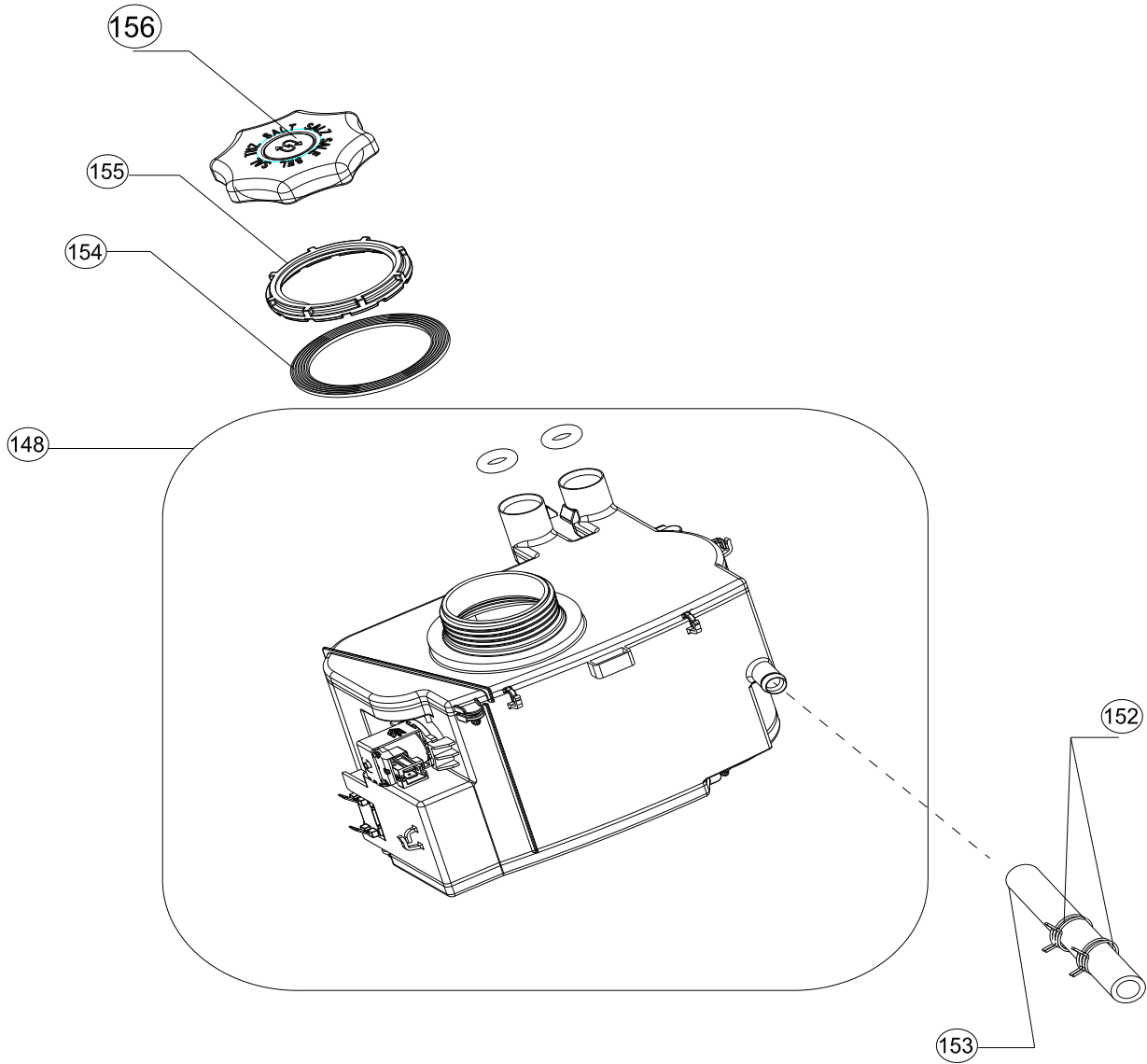
NO	PART NAME
300	LOWER BASKET GR- (301-302-303-304-305-306-307)
301	LOWER BASKET WHEEL GR
302	FOLDABLE COMBS HOLDER PLS
303	FOLDING SPIKES MECHANISM-RIGHT
304	FOLDING SPIKES MECHANISM-LEFT
305	FOLDDOWN COMB-RIGHT
306	FOLD DOWN COMB-LEFT
307	ALOWER BASKET PLASTIC HANDLE
325	PLASTIC SET BASKET (326-327-328)
326	PLASTIC BASKET HANDLE
327	PLASTIC BASKET COVER
328	PLASTIC BASKET



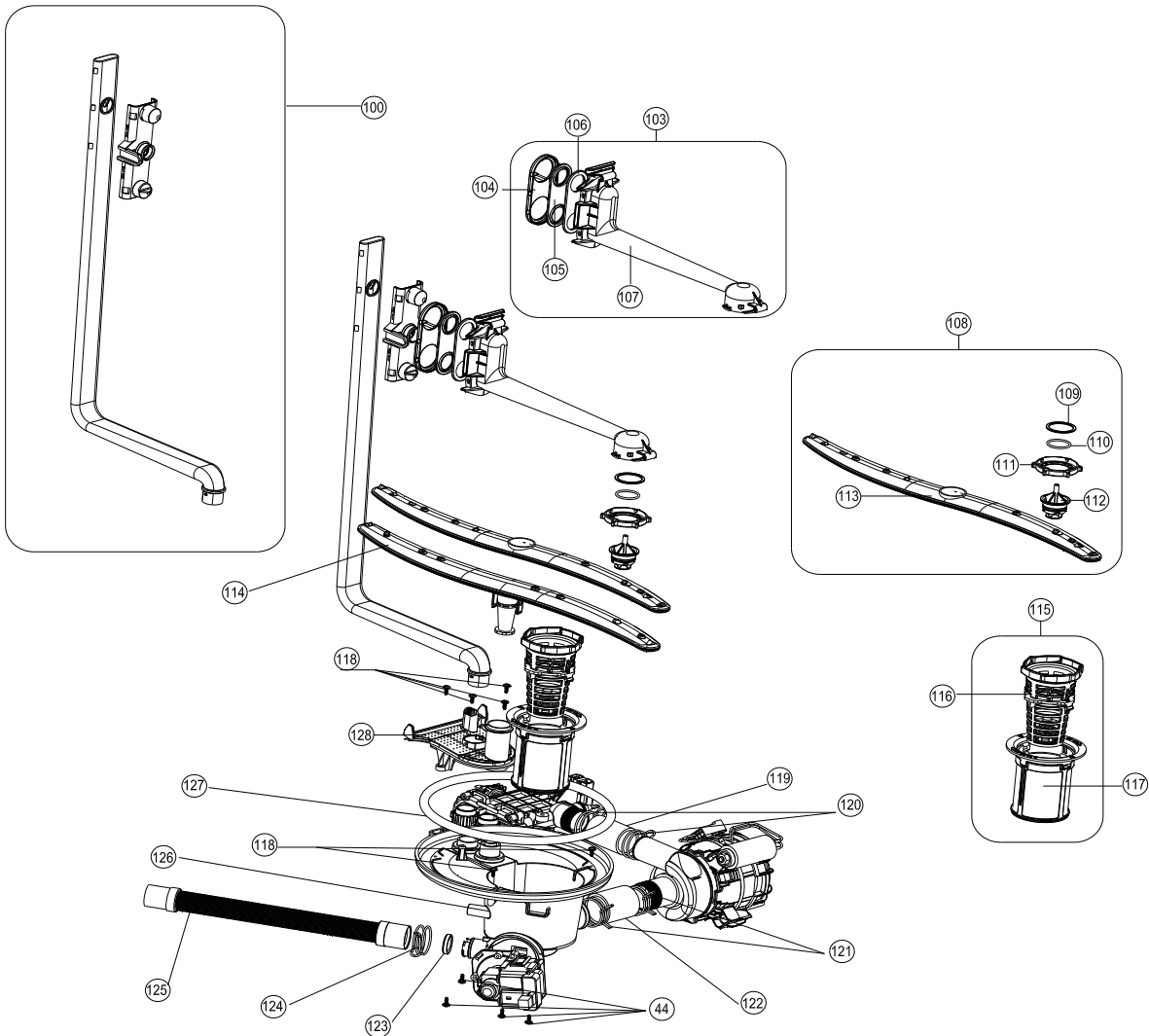
NO	PART NAME
350	UPPER BASKET GR.
351	MUG SHELF
352	UPPER BASKET WHEEL GR
367	FOLDING SPIKES HOLDER PLS
365	FOLDING SPIKES MECHANISM
307	UPPER BASKET PLASTIC HANDLE
362	FOLDING SPIKES-1B
361	FOLDING SPIKES-1A



NO	PART NAME
200	CON.PAN.GR/T21 CLAROS (201-203-239-240-222-223-216-232-218-206-233-209-210-224-42)
201	CON.PAN.PRINTED T21CLAROS
203	HANDLE/CLAROS
239	PROGRAM BUTTON GR-2/CLAROS
240	OPTION BUTTON GR-2/CLAROS/DS
223	DISPLAY BUTTON/CLAROS/DS/+
222	DISPLAY BUTTON/CLAROS/DS/-
216	BUTTON SHAFT(LIGHT WHITE)CLAROS
232	BUTTON SHAFT (START-PAUSE) /CLAROS
233	PCB BOX-1/NOVUS
209	PCB BOX -2/NOVUS
210	PCB COVER /NOVUS
224	DISPLAY BOARD BOX /CLAROS
42	SCREW PT3.5X9YSB(F.LI VE T.LI)
211	ELEKTRONIC KART T21_ E2
234	DISPLAY KART U14
213	ON/OFF SWITCH
225	DISPLAY KART U32
237	U1X DISPLAY CABLE NOVUS
238	U2X U3X DISPLAY CABLE NOVUS

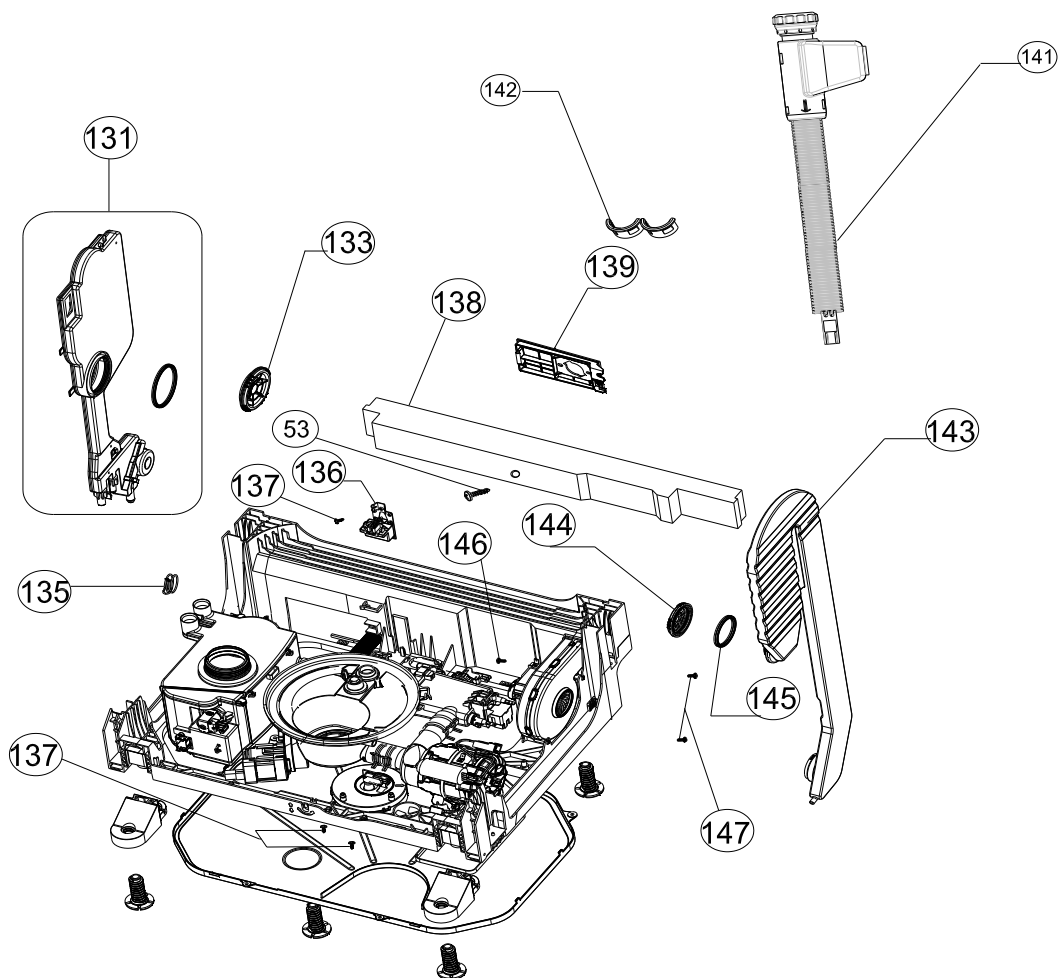


NO	PART NAME
148	WATER SOFTENER GR.WITH REED RELAY (151)
152	CLAMP Dmax19,6X8,8
153	HOSE D12*3*160
154	WATER SOFTENER NUT GASKET
155	WATER SOFTENER NUT
156	SALT CAP GROUP (MAGNETIC VERSION)



NO	PART NAME
100	UPPER SPRAY ARM FEEDING CANAL-L
103	UPPER SPRAY ARM SUPPORT GROUP (104-105-106-107)
104	UPPER SPRAY ARM ADAPTER COVER
105	UPPER SPRAY ARM ADAPTER GASKET
106	UPPER SPRAY ARM ADAPTER FLANGE
107	UPPER SPRAY ARM SUPPORT
108	UPPER SPRAY ARM GROUP(113-112-111-110-109)
109	UPPER SPRAY ARM NUT PLASTIC
110	UPPER SPRAY ARM SHAFT O-RING
111	UPPER SPRAY ARM NUT
112	UPPER SPRAY ARM SHAFT
113	UPPER SPRAY ARM

NO	PART NAME
114	LOWER SPRAY ARM
115	MICROFILTER GROUP (116-117)
116	COURSE FILTER
117	MICROFILTER
118	SCREW PT4X12 YSB INOX
119	HOSE D28,5X3
120	CLAMP Dmax36,4X14
121	CLAMP Dmax41X14,8
122	HOSE D33X3
123	KLAPE
124	CLAMP Dmax29,4X11,4)
125	DRAIN HOSE 200 CM
126	SUMP
127	SUMP SEAL
128	SPRAY ARM SUPPORT
44	SCREWPT4X12YSB



NO	PART NAME
131	AIR BREAK GROUP
133	AIR BREAK NUT
135	CLAMP Dmax16,8x8,4
136	PARASITE FILTER
137	SCREW PT3X9 YSB
138	CONCRETE WEIGHT
139	BASEMENT HOSE.CON.PLS.
141	SAFETY HOSE
142	SAFETY HOSE HOLDER
143	STEAM CONDERSER
144	STEAM CONDERSER NUT
145	STEAM CONDERSER SEALING GASKET
146	SCREWPT4X14YSB KEY HEAD 7MM
147	SCREWPT4X14YSB
53	SCREW 4X42,5 YHB

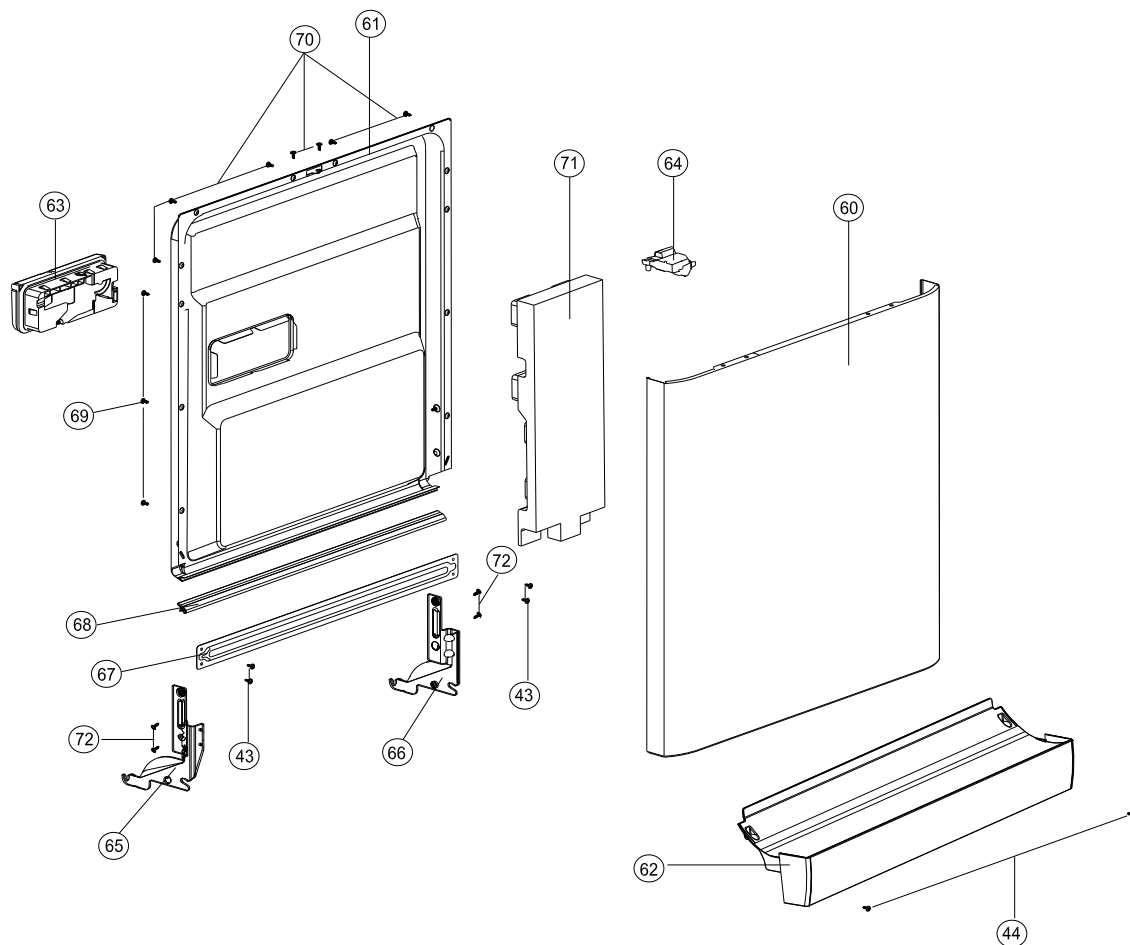


WHITE GOODS

VESTEL DISWASHER MACH .

DOOR GROUP

CUSTOMER
SUPPORT



NO	PART NAME
60	DOOR OUTSIDE
61	DOOR INSIDE SHEETIRON GROUP
62	PLASTIC KICK PLATE
63	DISPANSER WITHOUT REED RELAY
64	DOOR LOCK
65	HINGE MOVEMENT SHEETIRON LEFT
66	HINGE MOVEMENT SHEETIRON RIGHT
67	TWISTED SHEETIRON
68	DOOR SEAL
69	SCREW ST 3,9X12 FLAT HEAD INOX
70	SCREW PT4X14 FLAT HEAD INOX
71	DOOR SUPPORT STYROFOAM
72	SCREW M5X10 TORK HEAD (S)
43	SCREW M4X9 PAN HEAD (S)
44	SCREW PT 4X12 PAN HEAD COLLAR CROSS

APRIL 2012

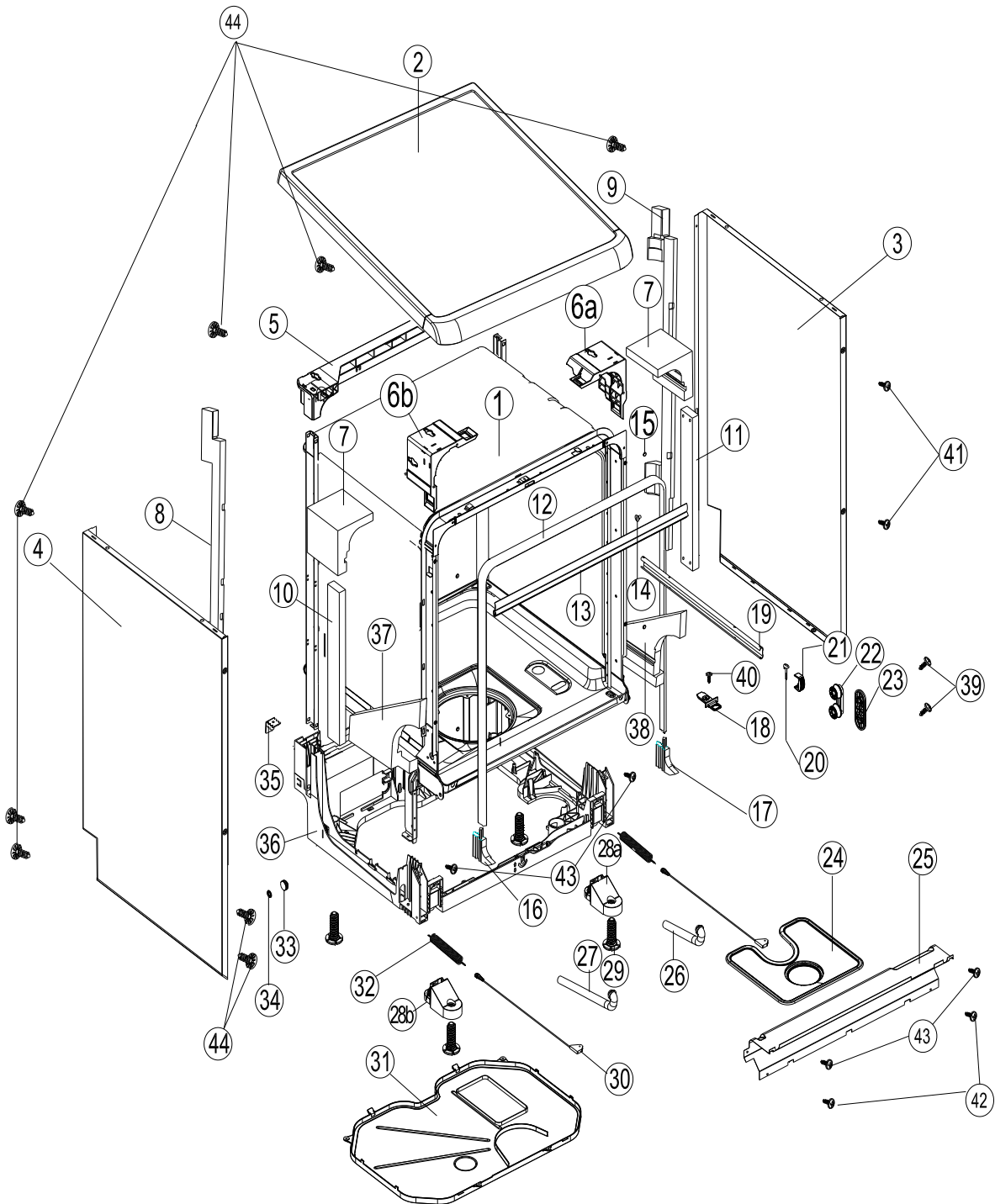


WHITE GOODS

VESTEL DISWASHER MACH .

TUBE GROUP

CUSTOMER SUPPORT



NO	PART NAME
1	TUBE ASSEMBLY
2	UPPER TRAY GROUP
3	FLAT/SIDE PANEL SHEETIRON-RIGHT
4	FLAT/SIDE PANEL SHEETIRON-LEFT

NOT: The spare part with poz no 14 is not valid form 06.2011

5	REAR UPPER PLS.CROSS BAR
6a	UPPER TRAY SUPPORT PART/RIGHT
6b	UPPER TRAY SUPPORT PART - LEFT
7	TUB TOP CORNER STYROFOAM
8	BACK CROSS BAR STYROFOAM-LEFT
9	BACK CROSS BAR STYROFOAM-RIGHT
10	FRONT CROSS BAR STYROFOAM-LEFT
11	FRONT CROSS BAR STYROFOAM-RIGHT
12	TUB GASKET
13	TOP TUB OF GASKET
14	TUB HOLE PLUG
15	SIDE PANEL FRONT CROSS BAR SCR CUPS/
16	BOTTOM CORNER GASKET-LEFT
17	BOTTOM CORNER GASKET-RIGHT
18	LATCH DOOR
19	UPPER BASKET RAIL
20	UPPER BASKET STOPPER-REAR
21	UPPER BASKET RAIL LOCK-FRONT
22	UPPER BASKET RAIL CON.BRA.GROUP
23	UPPER BASKET RAIL CON.BRA -REAR
24	METAL/PLASTIC FILTER
25	KICKPLATE SHEETIRON
26	OVERFLOW PIECE FROM TUB WITH HOSE/300mm
27	OVERFLOW PIECE FROM TUB WITH HOSE/450 mm
28a	FRONT FOOT CONN.PART-2 / RIGHT
28b	FRONT FOOT CONN.PART-2 / LEFT
29	ADJUSTED FOOT
30	HINGE CORD GROUP
31	LOWER COVER
32	HINGE SPRING
33	HINGE PULLEY
34	FIXED PULLEY SEG
35	SPRING CONNECTION PART
36	BASEMENT
37	TUB LOWER CORNER STYROFOAM-LEFT
38	TUB LOWER CORNER STYROFOAM-RIGHT
39	SCREW PT5X20 WN 5451 TORX RONDELALI
40	SCREW M4X6 SB
41	SCREW 3,9X9,5 FLAT HEAD
42	SCREW PT3,5X9 PAN HEAD COLLAR CROSS)
43	SCREW M4*9 SB PAN HEAD (S)
44	SCREW PT4X12 PAN HEAD COLLAR CROSS

APRIL 2012

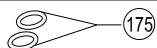
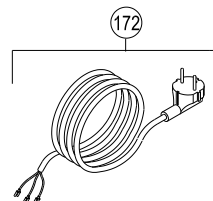
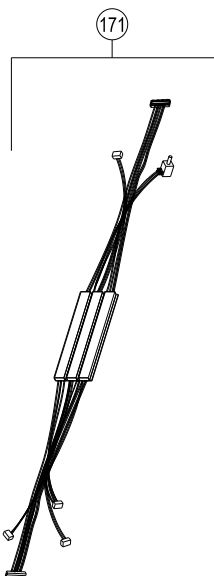
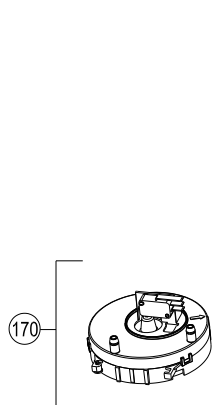


WHITE GOODS

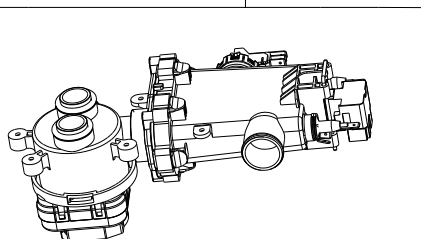
VESTEL DISWASHER MACH .

COMPONENTS

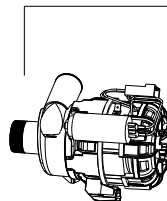
CUSTOMER
SUPPORT



173



176



177



178



179

NO	PART NAME
170	FLOATER
171	CABLE HARNESS
172	POWER CABLE 180cm/WHITE
173	HEATER CASING WITH DIVERTER
175	HEATER CASING O-RING
176	DRAIN PUMP
177	WASHING PUMP
178	WASHING PUMP VINE SUPPORT
179	TURBO FAN

APRIL 2012